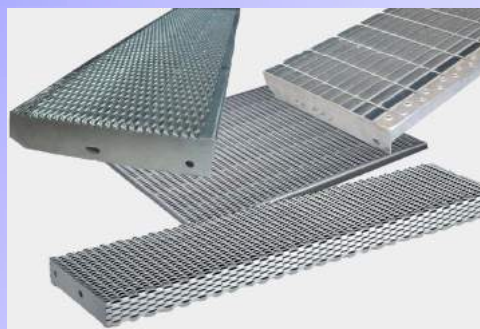
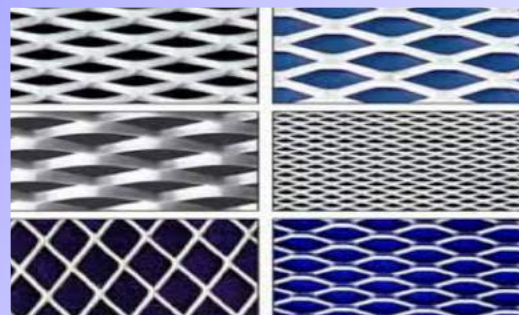
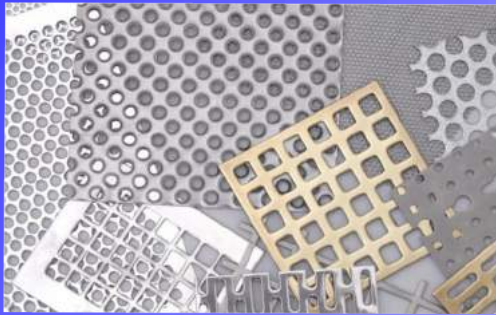


Larp S.R.L.



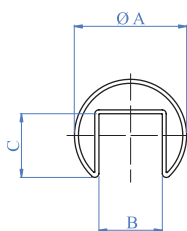
LARP SRL Unipersonale
Via Provinciale sp 28, n.2/b - 22070 Senna Comasco (CO)
Tel / Fax 031-710761 email: larp.senna@gmail.com

LED SYSTEM

Molto utile perchè permette di illuminare una scala o una passeggiata senza dover necessariamente illuminare tutto un ambiente. Aumenta la tua sicurezza senza aumentare i tuoi costi grazie ai LED di ultimissima generazione ad alto risparmio energetico

Now you can provided direct lighting for stairs without the hassle of overhead lighting sources. Increase safety without raising costs thanks to the latest generation of high energy efficiency LED technology.

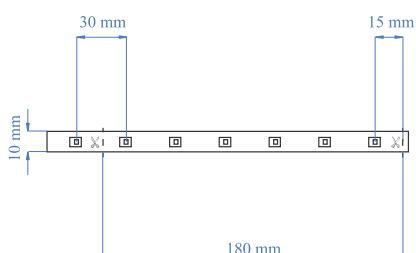




Corrimano in acciaio appositamente disegnato per la linea Led Railing System

Steel handrail specially designed for the Led Railing System line

AISI304	AISI316	Tube Tube	A	Lunghezza Length	B	C
E1000424	E1100424	Ø 42,4 x 1,5 mm 1 2/3" dia. x 1/16"		6000 mm 19' - 8"	24 mm 15/16"	24 mm 15/16"



Il rivoluzionario Cavo Led: totalmente impermeabilizzato ultraluminoso (sopra a 180 lumen) ultrasottile, flessibile facile da installare e tagliare praticamente indistruttibile

The revolutionary LED Cable: totally waterproof ultra-bright (over 180 lumens) ultra-thin flexible easy to install and cut, virtually indestructible

LED	Metro Meter
ELED0001	Venduti a metro. Lunghezza massima 25 metri Sold by the meter. Maximum length 82'

Input voltaggio - Input voltage	24 V
Input corrente - Input current	154 mA
Potenza - Power	3,7 W/m
Peso - Weight	60 g/m
Vita - Life time	35,000h
Angolo luminosità - Beam angle	110°
Luminouse /mt	198 lm
CRI	72
N. Led/18 cm/7 1/16"	6
T° di esercizio - Operating T°	-20 C° + 50 C°
Uso - Use	interno/esterno - Indoor/outdoor

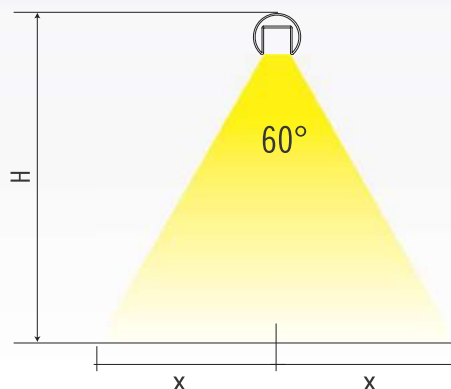


Ogni 18 cm sono segnati i punti dov'è possibile tagliare il nastro

Every 7 1/16" you find marks where you can cut the ribbon

USCITA LUCE E DISTRIBUZIONE COLORE LIGHT EXIT AND COLOUR DISTRIBUTION

H	X
1200 mm - 47 1/4"	692 mm - 27 1/4"
1100 mm - 43 1/4"	635 mm - 25"
1000 mm - 39 1/2"	579 mm - 22 13/16"
900 mm - 35 7/16"	519 mm - 20 7/16"
800 mm - 31 1/2"	461 mm - 18 5/32"





Descrizione
Description

ELED0002 Per collegare la striscia Led all'alimentatore
To connect the Led strip to the feeder

Descrizione
Description

ELED0003 Per unire due strisce Led linearmente
To join two Led strips linearly

Descrizione
Description

ELED0004 Per unire due strisce Led con un cavo flessibile di 15 cm
To join two Led strips by a 5 7/8" flexible cable

Descrizione
Description

ELED0009 Per unire le strisce led con un angolo fisso a 90°
To join two led strips with a 90° elbow

Descrizione
Description

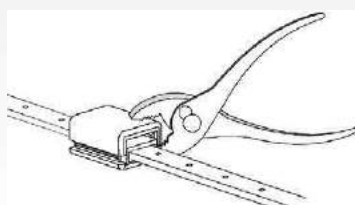
ELED0005 Da utilizzare ad ogni installazione. Protegge la fine della striscia non connessa
To be used at each installation. Protects the end of the strip not connected

Alimentatori
Feeders

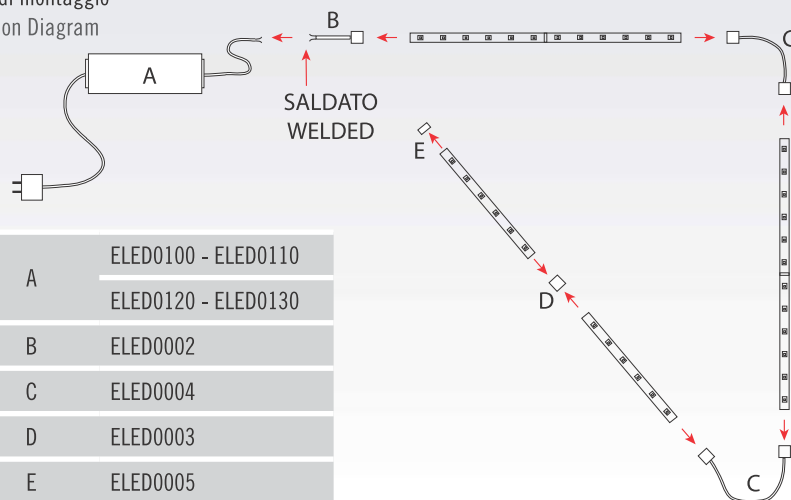
	Dimensioni Dimensions	INPUT	OUTPUT	POTENZA POWER
ELED0100	190 x 52 x 37 mm 7 15/32" x 2 1/32" x 1 7/16"	100-240VAC 2,2 A 50/60 Hz	+24 V 4,2 A	100 W < 27 mt - 1063"
ELED0110	162,5 x 42,5 x 32 mm 6 3/8" x 1 21/32" x 1 1/4"	100-240VAC 1,2 A 50/60 Hz	+24 V 2,5 A	60 W < 16 mt - 629-29/32"
ELED0120	148 x 40 x 30 mm 5 13/16" x 1 9/16" x 1 3/16"	100-240VAC 1,1 A 50/60 Hz	+24 V 1,5 A	35 W < 9 mt - 354-5/16"
ELED0130	140 x 30 x 20 mm 7 1/2" x 1 3/16" x 25/32"	200-240VAC 0,3 A 50/60 Hz	+24 V 0,75 A	18 W < 4 mt - 157-1/2"

Utilizzare una pinza per fare pressione sia dall'alto che nel basso dei connettori per unire le strisce di Led

Use a clamp to apply pressure from above and below the connectors to join the strips of Led



Schema di montaggio
Installation Diagram



A	ELED0100 - ELED0110 ELED0120 - ELED0130
B	ELED0002
C	ELED0004
D	ELED0003
E	ELED0005

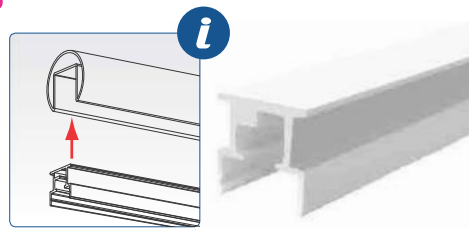


Il semplicissimo sistema di led railing utilizza dei braccetti di sostegno di facile fissaggio al tubo scanalato.

The simple Led railing system employs supporting brackets that can be easily attached to the slotted tube.

NEW

PVC	Descrizione <i>Description</i>	Lunghezza <i>Length</i>
ELED0014	Profilo di colore bianco da applicare al tubo scanalato per lo scorrimento delle strisce Led Profile of white color to be applied to the slotted tube for the sliding of the Led strips	2000 mm 78 3/4"
ELED0015	Profilo di colore bianco da applicare al tubo scanalato per lo scorrimento delle strisce Led Profile of white color to be applied to the slotted tube for the sliding of the Led strips	Kit 5 pz. x 100 mm Kit 5 pc. x 3 5/16"



PLASTIC	Descrizione <i>Description</i>
ELED0006	Per attaccare le strisce Led al corrimano scanalato Confezione da 10 pz con viti To attach the Led strips to the slotted handrail. Packaging: 10pcs with screws



PVC	Descrizione <i>Description</i>	Lunghezza <i>Length</i>
ELED0012	Guarnizione trasparente di copertura led ad incastro Interlocking led cover in transparent rubber	2000 mm 78 3/4"



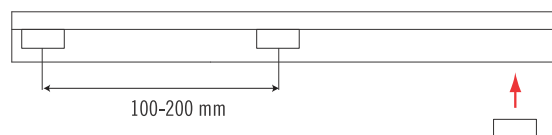
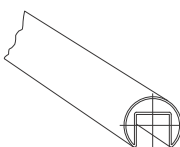
BIADHESIVE TAPE	Descrizione <i>Description</i>	L Bobina <i>Coil length</i>	Dimensioni <i>Dimensions</i>
E1999892	Nastro biadesivo Double sided adhesive tape	33 mt 108' 3" 13/64"	15 x 1,5 mm 19/32" - 1/16"



1a

Applicare l'articolo ELED0015 all'interno del tubo scanalato grazie all'utilizzo del biadesivo E1999892 che si trova in dotazione. Posizionare i braccetti di fissaggio ad una distanza massima di 100-200 mm in funzione del fissaggio che si vuole ottenere

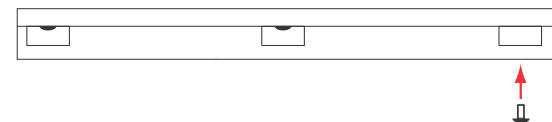
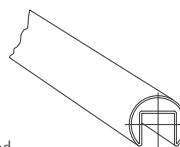
Apply the article ELED0015 inside the slotted tube using the supplied biadhesive E1999892 Place the locking brackets at a maximum distance of 3 15/16"-7 7/8" as a function of fixing to be obtained



1b

Per un fissaggio ancora più sicuro è possibile utilizzare delle viti M3 ancorate direttamente al corrimano scanalato. Ind.i.a. consiglia di eseguire un pre-foro prima di utilizzare la vite M3.

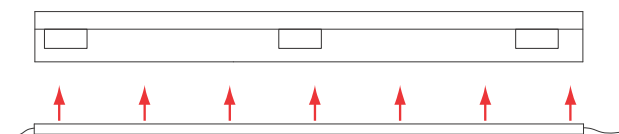
For a more secure fixing you can use the M3 screws directly anchored to the slotted handrail. Ind.i.a. recommends to make a pre-drilled hole before using the M3 screw



2

Applicare le luci Led al braccetto facendo una leggera pressione.

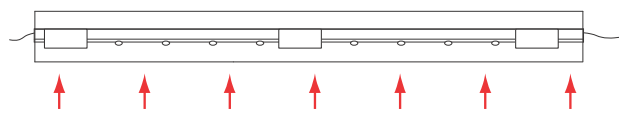
Apply the Led lights to the bracket by a slight pressure.

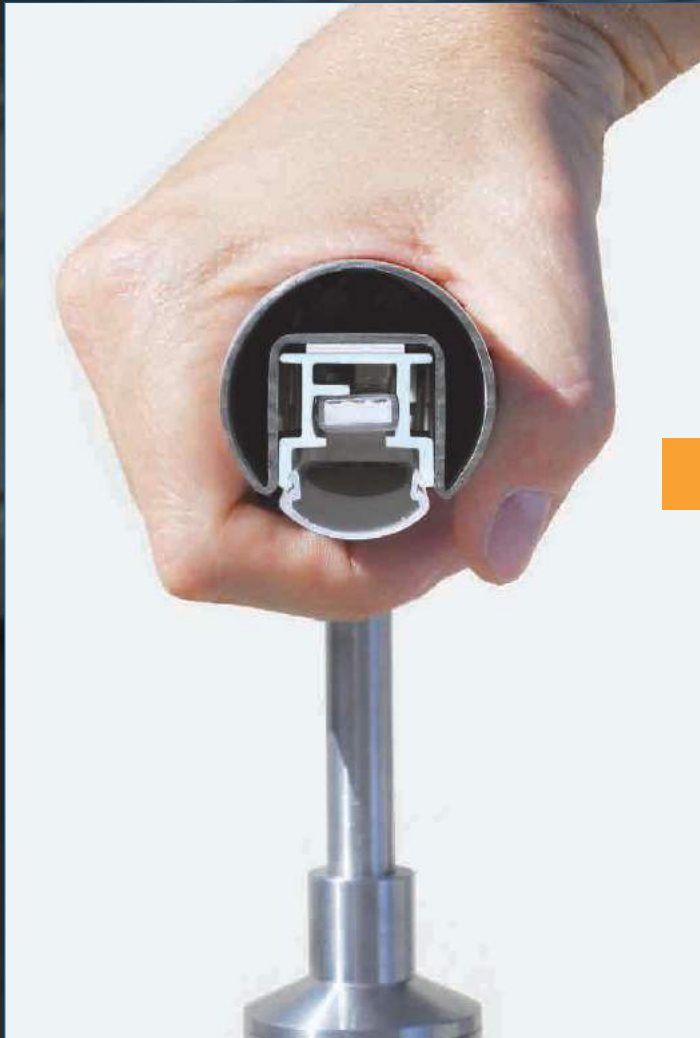


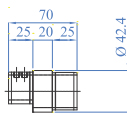
3

Chiudere il profilo con il led con la guarnizione trasparente ELED0012

Close the profile with the led with the transparent gasket ELED0012

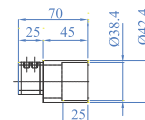






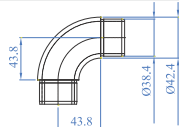
AISI316 Descrizione
Description

E1200120 Per unire il tubo scanalato ad un normale tubo Ø 42,4 mm
To join the slotted tube to a normal tube 1 2/3" dia.



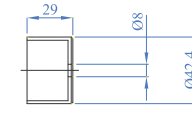
AISI316 Descrizione
Description

E1200130 Per unire il tubo scanalato all'articolo E450
To join the slotted tube to art. E450



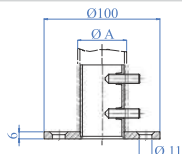
AISI316 Descrizione
Description

E450 Raccordo a 90°
90° connector



AISI316 Descrizione
Description

E1100120 Per andare con il cavo a parete
To lead the cable to the wall

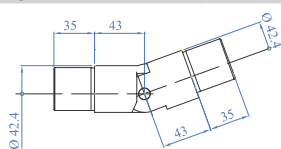


Fori con svassi e
perimetro bisellato
Countersunk holes and
chamfered perimeter

AISI304 **AISI316** Descrizione
Description

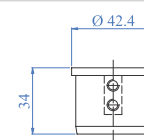
Per tubo A
For tube A

E0213 E0213316 Ancoraggio a pavimento
Floor anchorage Ø 42,4 x 2,0 mm
1 2/3" dia. x 5/64"



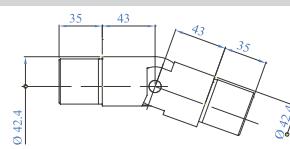
AISI316 Descrizione
Description

E1510100 Raccordo per tubo scanalato basculante
Articulated connector for slotted tube



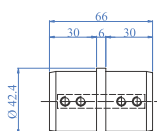
AISI316 Descrizione
Description

E1100100 Tappo terminale
End cap



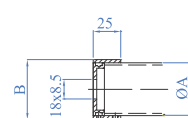
AISI316 Per tubo
For tube

E1520100 Raccordo basculante per tubo scanalato 25-55° verso il basso
Articulated connector 25-55° down for slotted tube



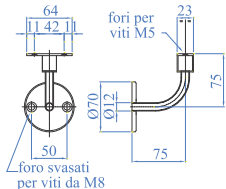
AISI316 Per tubo
For tube

E1200100 Ø 42,4 x 1,5 mm
1 2/3" dia. x 1/16"



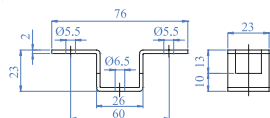
AISI316 Per tubo A B

E2070 Ø 42,4 mm 48,6 mm
1 2/3" dia. x 5/64" 1 7/8"



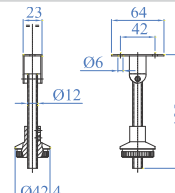
AISI304 **AISI316** Descrizione
Description

E1530100/304 E1530100 Reggicorrimano a parete
Wall handrail support



AISI304 **AISI316** Descrizione
Description

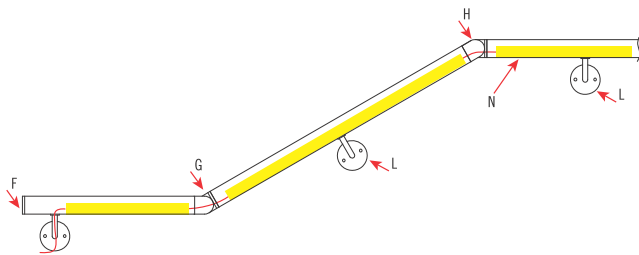
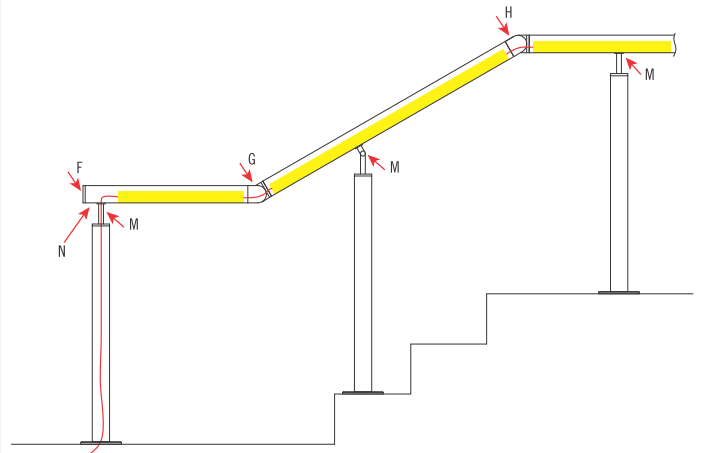
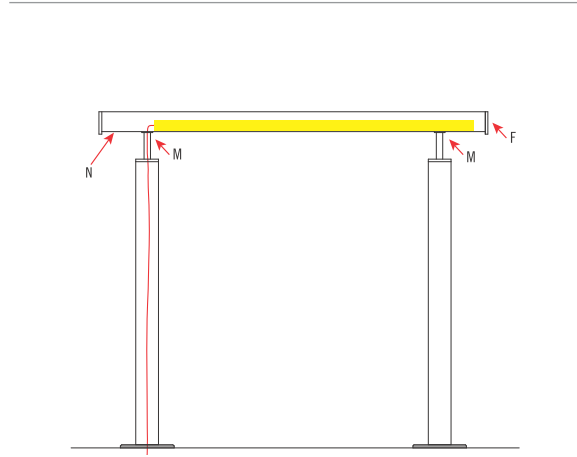
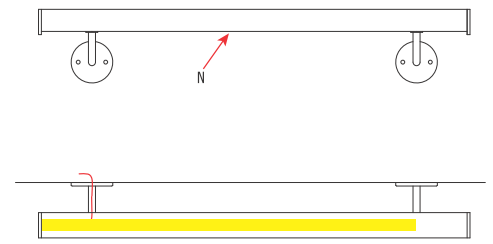
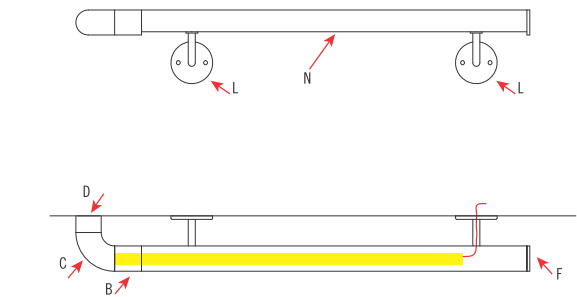
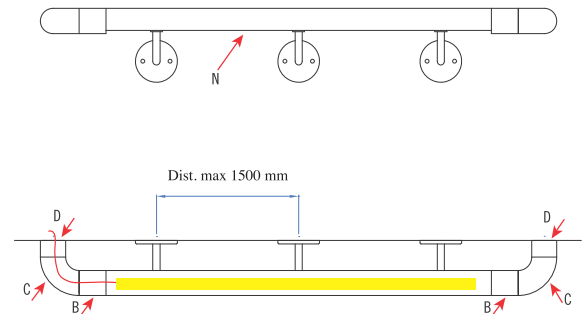
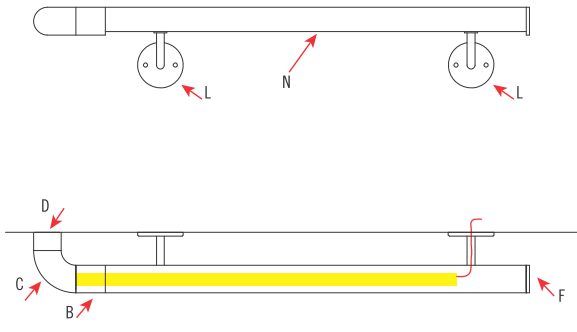
E1540120/304 E1540120 Sella per reggicorrimano
Mounting plate for handrail support



AISI304 **AISI316** Descrizione
Description

E1540100/304 E1540100 Reggicorrimano per montante
Handrail support for newel post

ESEMPI DI APPLICAZIONE
EXAMPLES OF APPLICATIONS



	ELED0001
A	E1200120
B	E1200130
C	E450
D	E1100120
E	E0213
F	E1100100
G	E1510100
H	E1520100
I	E1200100
L	E1530100
M	E1540100
N	E1000424 - E1100424



USO INTERNO ED
ESTERNO

INDOOR
OUTDOOR USE



Forma cilindrica Ø 42,4 mm - Cylindric shape 1 2/3" dia.

AISI316	Per tubo For tube	POTENZA POWER
ELED1000	Ø 42,4 x 2,0 mm 1 2/3" dia. x 5/64"	1 W
ELED1100	Superficie piana - Flat face	1 W

USO INTERNO ED
ESTERNO

INDOOR
OUTDOOR USE



Forma cubica lato 40 mm - Cubic shape side 1 9/16"

AISI316	Per tubo For tube	POTENZA POWER
ELED2000	Ø 42,4 x 2,0 mm - 1 2/3" dia. x 5/64"	1 W
ELED2100	Superficie piana - Flat face	1 W



Alimentatore - Feeder tipo di cablaggio: in serie - type of wiring: sequence

	Dimensioni Dimensions	INPUT	OUTPUT	POTENZA 14 W POWER 14W
ELED0150	81 x 39 x 20 mm 3 2/3" x 1 17/32" x 3/4"	200-240VAC 0,12 A 50/60 Hz	3-38 V 0,35 A	MIN 4 LED MAX 12 LED